

Tel: 0121 770 3168

Email: office@st-anthonys.solihull.sch.uk

Headteacher: Mr C. Flaherty



St Anthony's Catholic Primary School,
Fordbride Road,
Kingshurst,
Birmingham,
B37 6LW.

Friday 12th June 26



This half term, we are growing to be attentive to our experience and to our vocation; and discerning about the choices we make and the effects of those choices.



The element of human genius is not in what we do but in what we are prepared to discover about ourselves.

Sir Ken Robinson (English educator)

St Anthony's Church
60th Anniversary Celebration

Entry is **FREE**

St Anthony's school fields
Fordbride RD
Birmingham
B37 6LW

Saturday 13th June
2:30pm- 4.30pm

ALL ARE WELCOME!

DJ
Face Painting
Bouncy Castles
Food & Drinks vans
Entertainments and MUCH more!!!

1pm - St Anthony's Church.

At 1pm Bishop Timothy Menezes will celebrate Holy Mass for the feast of our patron, St Anthony in the church. This mass does fulfill the obligation to attend mass on Sunday. This will be followed by a hymn of thanksgiving by the Romanian Orthodox community, before we move outside for the celebrations. Attendance at mass is not required to come to the after celebrations.

Please come and support our church's 60th anniversary celebrations tomorrow.

Mass

1pm – 2:30pm

Celebration on the field

2:30pm – 4:30pm

PTA page

ST ANTHONY'S PTA
RAINBOW HAMPERS
WORLD CUP THEMED!

We're collecting donations to create amazing World Cup themed hampers. Each class has a team – let's fill our hampers with items in your team's colours.

DONATIONS TO BE IN BY 19TH JUNE
TICKETS ON SALE FROM 15TH JUNE
EACH CLASS HAS A TEAM!

★ SCOTLAND ★ DARK BLUE & WHITE TINY ANTS NURSERY	★ ENGLAND ★ RED & WHITE RECEPTION	★ SPAIN ★ RED & YELLOW YEAR 1	★ BRAZIL ★ YELLOW & GREEN YEAR 2
★ FRANCE ★ RED, WHITE & BLUE YEAR 3	★ GERMANY ★ RED, YELLOW & BLACK YEAR 4	★ PORTUGAL ★ RED & GREEN YEAR 5	★ ARGENTINA ★ BABY BLUE & WHITE YEAR 6

WINNERS TO BE DRAWN IN ASSEMBLY FRIDAY 26TH JUNE.

There's still time to send in donations for our rainbow hampers. These can be non-perishable foods, drinks, toiletries, cleaning products, toys, stationery, treats, gifts or any other safe and suitable items. The more colourful and creative, the better! Every item donated will help to create some fantastic hampers for our PTA raffle, raising valuable funds for the school.

Year group	Item colours
Tiny Ants and Nursery	Dark blue or white
Reception	Red or white
Year 1	Red or yellow
Year 2	Yellow or green
Year 3	Red, White or blue
Year 4	Red, yellow or black
Year 5	Red or green
Year 6	Baby (pale) blue or white

PTA



Follow us on
Instagram!

@stanthonys.pta

Stay updated with St. Anthony's
PTA events, news, and
fun moments!



FREE BOOKS!

St. Anthony's Big Book Give Away



Monday 15th June

straight after school

*Books are free to a good home or for a
small donation if doable.*

Thank you for your support!

Things to talk about..

TAKEHOME

8th - 14th June



How can we protect the oceans?



'TUESDAY NEWS DAY'

This week we learnt that 8th June is World Oceans Day, a time when people around the world think about how to care for seas, oceans and the creatures living in them. Dutch inventor, Boyan Slat, first became worried about ocean pollution as a teenager after seeing huge amounts of plastic while diving. He created the organisation The Ocean Cleanup, which designs special systems to remove rubbish from oceans and stop more plastic entering rivers and seas.

Things you could talk about at home:

- What small changes could families make to help protect the oceans?

✕

Pope Leo XIV says...

✕

✕

✕



Football reminds us of something we must not forget: life is not a race to show off on our own, but a path we learn to walk together.

Park & Stride

Solihull Council are promoting the carpark by the basketball court off Fordbridge Road as alternative parking away from school and will shortly be providing the school with bespoke railing banners showing the location of the alternative parking and suggested routes, and leaflets to hand out to parents ahead of the launch.



St Anthony's Catholic Primary School

Key

- Proposed walking route
- Roads
- 5 minute walk radius
- P Parking

Park & Stride

Little steps, big difference

St Anthony's Catholic Primary School

Solihull METROPOLITAN BOROUGH COUNCIL

The image is a composite of two parts. The left part is a map of the area around St Anthony's Catholic Primary School, showing streets like Kingshurst Rd, Fordbridge Rd, and various parks. A red dotted line indicates a proposed walking route from a parking area (marked with a 'P') near the basketball court to the school. The right part is a green leaflet cover with the 'Park & Stride' logo and the slogan 'Little steps, big difference'. It features an illustration of a family walking and the logos of St Anthony's Catholic Primary School and Solihull Metropolitan Borough Council.

Nursery Places, September 2026



APPLICATIONS ARE OPEN

NURSERY PLACES 2026



At St Anthony's Nursery, children flourish in a warm, nurturing Catholic environment where every child is known, valued and encouraged to achieve their best. Our **Outstanding** Early Years provision provides children with the very best start to their educational journey.

Our experienced Early Years team creates exciting learning opportunities that develop confidence, independence, communication skills and a love of learning, ensuring children are fully prepared for Reception and beyond.

SCAN ME



EVERY DAY IS AN OPEN DAY!

Please contact us to organise a visit.

We are accepting applications for **September 2026.**



<https://www.st-anthonys.solihull.sch.uk/>



0121 770 3168



office@st-anthonys.solihull.sch.uk

Nursery Places, September 2026



WHY CHOOSE ST ANTHONY'S NURSERY?

- 🌟 **Outstanding** Early Years Provision (Ofsted 2022)
- ✔️ Caring **Catholic** ethos rooted in Gospel values
- ✔️ Strong focus on **communication, language** and **early reading**.
- ✔️ Excellent preparation for Reception and future learning
- ✔️ Experienced and nurturing staff team
- ✔️ Seamless transition into our Reception class



FUNDING AVAILABLE

- ✔️ Funded places for eligible 2-year-olds
- ✔️ Universal 15 hours funding for all 3 and 4-year-olds
- ✔️ 30 hour funding for eligible working families
- ✔️ Full wraparound care available

“ The staff helped our child grow in confidence and independence. We couldn't have wished for a better start to school life. ”

“ My teacher helps me learn new things every day. ”

“ I love playing outside with my friends! ”



<https://www.st-anthonys.solihull.sch.uk/>



0121 770 3168



office@st-anthonys.solihull.sch.uk

Water Safety Advice

ALWAYS FOLLOW THE WATER SAFETY CODE



Whenever you are around water:

STOP AND THINK STAY TOGETHER

Take time to assess your surroundings.
Look for the dangers and always research local signs and advice.



When around water always go with friends or family.
Swim at a lifeguarded venue.



In an emergency:

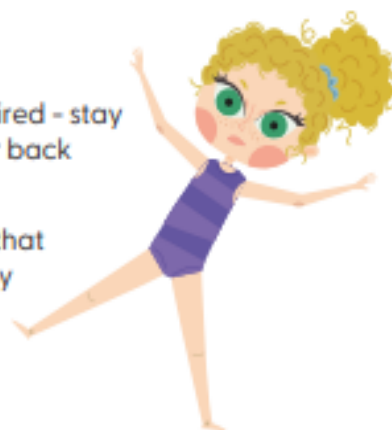
CALL 999

If you are at the coast, call 999 and ask for the Coastguard.
Don't enter the water to rescue.



FLOAT

Fall in or become tired - stay calm, float on your back and call for help.
Throw something that floats to somebody that has fallen in.



ROYAL LIFE SAVING SOCIETY UK

Enjoy Water **Safely** | Free From Drowning



Learn more about water safety.
Scan the QR code

Attendance

Celebrating Attendance!

Our attendance raffle winners were:
Gabriella, Bella P, Mikey, Jiyaa,
Jayden, Jaedal and Everleigh. We
hope you enjoy your sweet treat!



Celebrating Class and House Attendance!

Winning House: *St. George*

Winning Classes: *Year 4 & Reception*



St David's

St George's

St Patrick's

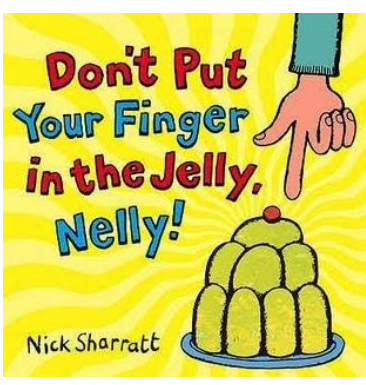
GREAT JOB!

HOUSE



Tiny Ants

This week Tiny Ants have been reading the story 'Don't Put Your Finger in the Jelly, Nelly'. The children made strawberry jelly, counting how many scoops they needed to fill their bowls. They used chopsticks to improve their finger skills to collect spaghetti hoops, cooked their lunch using knives and forks to cut up, danced to the song 'Jelly on a plate' and shared the story with friends.



Nursery

This week in Nursery, we have been learning all about the sea, including: how to keep safe in the sea by staying with a grown up, wearing arm bands if needed and speaking to a lifeguard if we need help. We have also learnt lots of facts about the different sea creatures we might see. As part of this we have created our own under the sea pictures by cutting out and sticking different sea creatures. During our play we have explored sea creatures, boats and pirates, in the water, sand and playdough. This has enabled us to develop our imaginative play and encouraged us to add storylines to our play.



Imaginative role play in our own ice cream van station has also proved popular. This has allowed us to develop our language skills and use lots of language about money, amounts and different flavours.



Reception

This week in Reception, we have learnt all about dinosaurs! In Drawing Club, we wrote about the Night Manager's friendly dinosaur who loved to play fetch. The children wrote brilliant sentences describing the dinosaur, what it might like to eat, and where it escaped to. In Understanding the World, we learnt all about fossils. The children had the exciting opportunity to hold real fossils and create fossil rubbings in class. We also made and decorated our own dinosaur tails and created volcanoes, which helped bring our dinosaur learning to life. In RE, we learnt about the role of a priest. The children thought of and wrote questions that they would like to ask Fr Sean and discussed his important role within the Church community. We also explored different objects that a priest uses during Mass and learnt about their purpose and significance.



Year 1

This week in Year 1, we have started our new topic on place value to 100 in Maths. We have been counting up to 100 and also partitioning numbers up to 100. The children also created a fantastic giant spider model as part of our sculpture unit in Art; rolling, folding and scrunching paper to make the different parts of the spider. In our computing unit 'Digital Writing' the children have been learning to identify and use the correct buttons to add and remove text – they are doing brilliantly!

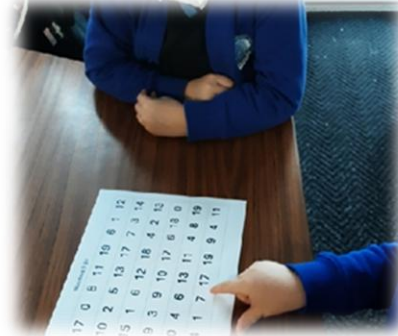
Place Value



Tens	Ones
8	6
eighty-six	

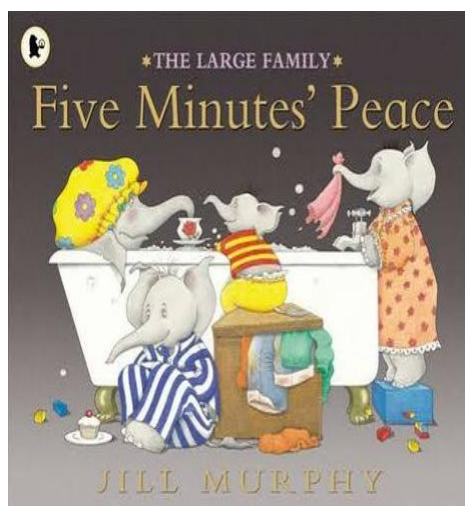
Hundreds	Tens	Ones
3	8	6
three hundred eighty-six		

Thousands	Hundreds	Tens	Ones
1	3	8	6
one thousand three hundred eighty-six			



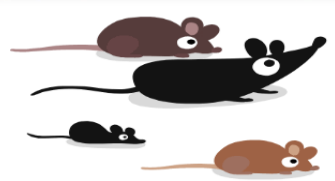
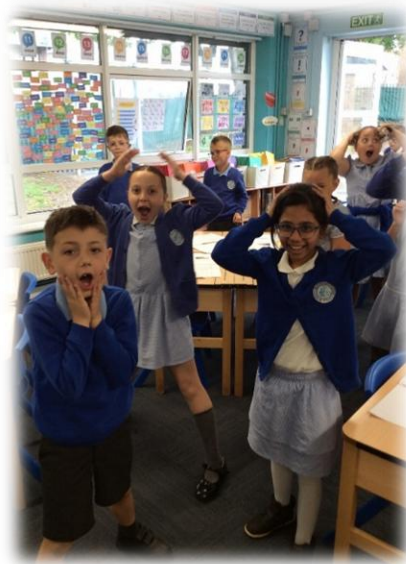
Year 2

This week in Year 2, we have been doing athletics and outdoor adventure activities in our PE lessons. The children have enjoyed taking part in this and learning lots of fantastic new skills. In Maths, we have been continuing our learning on statistics. The children are becoming experts on tally charts, block diagrams and pictograms! In English, we are continuing to explore stories written by different authors and the children have written a fantastic character description of 'Mrs Large' from a Jill Murphy book, 'Five Minutes' Peace'. 😊



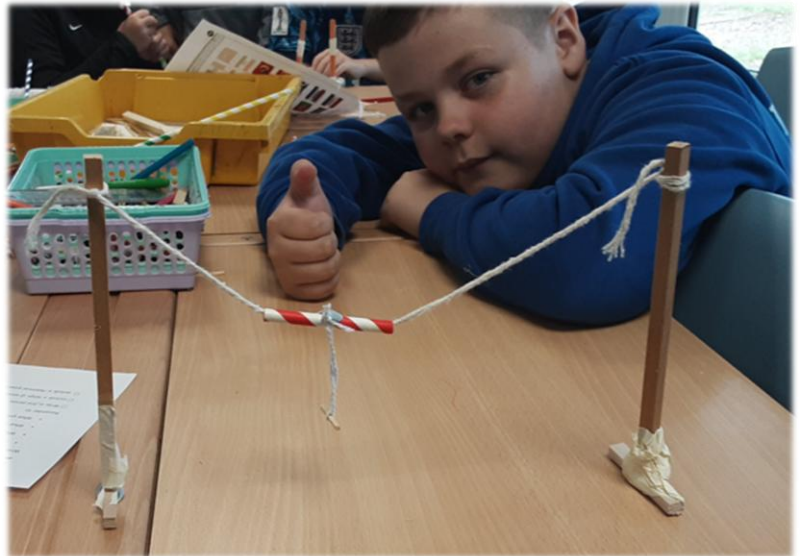
Year 3

First and foremost, a huge well done to the Holy Communion children: you all looked gorgeous and made all your teachers so proud! Each one of you did superbly - well done! We have been doing some tricky maths continuing with durations and start and end times. We created freeze-frames in English, trying to imagine how the people of Hamelin felt being surrounded by rats. We continued looking at the story of the Pied Piper and explored some of the unfamiliar words that are used in the story.

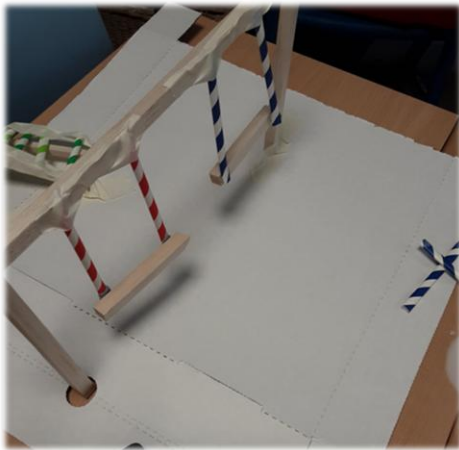


Year 6

Year 6 have been busy creating their playground structures in DT this week. Having planned their playgrounds through drawing and CAD (computer aided design), they then spent this week constructing their prototypes using a range of materials including wood and saws. Thank you to Mrs Harriman for leading on this mammoth task! The children demonstrated great collaboration and teamwork. In RHE this week, the children demonstrated a mature attitude in completing a 'Find Someone Who' task around our current unit of learning.



Find Someone Who



Summer Uniform

Summer uniform can be worn after Easter until Autumn Term in October.

School Caps

School caps are recommended during the hot weather, these can be purchased from the School Office and are £6 (please pay on ParentPay)

School caps only – no other caps to be worn



Boys

**Grey trousers or school shorts*

**White sleeved shirt with a school tie or blue or white polo shirt*

**Black school shoes*

**Blue school jumper*

Girls

**Grey skirt, trousers, pinafore or blue gingham dress*

**White blouse with tie or blue or white polo shirt*

**Black school shoes (no heels, no sandals)*

**Blue school cardigan or jumper*

Lunch menu for w.b. 15th June 2026

		LUNCHTIME				
		MONDAY	TUESDAY	WEDNESDAY	THURSDAY	FRIDAY
FOOD FESTIVAL <small>By Ampers</small> WEEK 1 Spring/Summer 2026 13/04/26, 04/05/26, 25/05/26, 15/06/26, 06/07/26, 27/07/26, 17/08/26, 07/09/26, 28/09/26, 19/10/26	THE MAIN EVENT	Macaroni Cheese	Butter Chicken Curry with Rice	Roast Chicken, Stuffing, Roast Potatoes and Gravy	Chilli Con Carne with Rice	Fish Fingers or Salmon Fingers and Chips
	MEAT-FREE MAGIC <small>Veggie Dish</small>	BBQ Veggie Wrap with Rice	Vegetable Curry with Rice	Cauliflower & Broccoli Cheese Bake, Roast Potatoes and Gravy	Vegetable Bean Chilli with Rice	Cheese & Tomato Pizza with Chips
	RAINBOW ALLEY <small>Vegetables and Salads</small>	Broccoli	Sweetcorn	Carrots and Peas	Mixed Greens	Baked Beans and Peas
	BIG TOPPING <small>Filled Jackets</small>	Beans, Cheese or Tuna Mayo	Beans, Cheese or Tuna Mayo	Beans, Cheese or Tuna Mayo	Beans, Cheese or Tuna Mayo	Beans, Cheese or Tuna Mayo
	DESSERT TROLLEY	Maple Oaty Cookie	Chocolate Concrete Cake	Carrot Cake and Custard	Chocolate Cinnamon Cake	Vanilla Shortbread
What impact has your meal had on planet Earth today? 	DAILY SANDWICHES AVAILABLE		AVAILABLE DAILY DAILY SALAD BOWL, FRESHLY BAKED BREAD, YOGHURTS AND CUT FRUIT		PASTA TWIRLER AVAILABLE EVERY DAY TOPPED PASTA HOT PASTA TOPPED WITH HOMEMADE TOMATO SAUCE & CHEESE	

Due to school dinners being cooked fresh, please ensure that you pre order meals that your child will eat. Unfortunately, we cannot offer alternatives.

Ordering school lunches...

We have now moved to our new simplified lunch ordering system, a single login system via ParentPay

<https://www.parentpay.com/>



Lunch menu for 18th June 2026

**FOOD
FESTIVAL**
By Aspens

SUNSHINE SPLASH

18th June

Chicken Nuggets with Roasted Diced
Herby Potato

Or

Pizza Margaretta with Roasted Diced
Herby Potato

&

Chocolate
Popcorn Bars

Topped Pasta, Filled Jacket Potatoes &
Sandwiches also available



Please **PRE ORDER** for child's meal via ParentPay

<https://www.parentpay.com/>



Why only put water in school bottles?

A healthier choice for growing smiles

Smile Month



50 Years Celebrating Smiles

11th May -
11th June 2026

1



Protects Teeth

Water does not contain sugar or acid, so it won't contribute to tooth decay. Juice—even "natural" juice—can wear down enamel and lead to cavities.

3

Keeps kids properly hydrated

Water hydrates the body more effectively without any extra ingredients. It helps concentration, energy levels, and overall brain function during school.



2



Lower sugar intake

Juice often contains a lot of natural (and sometimes added sugar) Drinking it regularly can increase the risk of weight gain and energy crashes. Water has zero sugar.

4



Water is much cheaper than juice and is easily available from taps or fountains, making it a more practical everyday choice.

5



Encourages healthy habits early

Choosing water helps children build lifelong healthy drinking habits, making them less dependent on sugary drinks as they grow older.

Toilet Training Support



NHS
South Warwickshire
University
NHS Foundation Trust

TOILET TRAINING SUPPORT DROP IN

Is your child starting nursery school or Reception in September? Do you need any advice or support with toileting?

.....

Come along to our drop in session run by Solihull Health Visiting & School Nursing Team

Tuesday 23rd June
9:15am - 10:45am

Hatchford Brook Family Hub
Old Lode Lane, B92 8JE



No booking needed, just drop in



Attendance

Attendance and punctuality

Every child has the right to an education, and it is the legal responsibility for parents and carers to ensure that their children attend on time every day possible.

As part of St Anthony's Support First Approach, I wanted to sign post parents and carers to information and support.

Guidance and information about illness can be found at the link below.

<https://www.nhs.uk/live-well/is-my-child-too-ill-for-school/>

Solihull School Nursing service.

You can contact us by telephone on **0121 726 6754**, or via our Confidential Text Messaging service, called Parent Line, on 07480 635 496, to discuss any concerns or worries you have regarding your child's health and wellbeing.

Solihull Solar (mental health)

For routine support please complete our [referral form](#), if you wish to discuss this referral please call us during office hours on **0121 301 2750**

Education Participation advisory Service

Check session is being held before traveling to Elmwood place.

attendanceenquiries@solihull.gov.uk
or **0121 704 6191**

Tuesday 12-1.30pm @ Elmwood Place

Does your child worry about going to school? Do you feel you have tried everything to ensure your child attends school, but nothing seems to be working? Do you feel there has been a relationship breakdown with your child's school? Do you have general questions around school attendance?

Important information for Parents and Carers

Notification Regarding Extended Absence from School

We are writing to remind parents and carers of the school's legal responsibilities regarding pupil attendance.

Under the Education (Pupil Registration) Regulations, schools must notify the Local Authority when a pupil has been absent from school for **15 school days or more**, whether those absences occur:

- **Consecutively** (15 school days in a row), or
- **Cumulatively** (15 school days in total over the academic year).

This notification requirement applies regardless of whether absences are authorised or unauthorised and is intended to help ensure that children receive appropriate support and access to education.

School Absence

If the reason for absence is due to illness, **medical evidence may be requested** to support this, please send; screenshots of appointments, prescriptions or any other supporting correspondence.

Remember to call the **school absence line** to advise of your child's absence and include their symptoms, reasons of; **'unwell', 'tired' or 'under the weather'** do not give school enough information about your child's illness.

We kindly ask all families to be honest about the reason for any absence. It is not fair to put children in the difficult position of feeling they must hide the truth about where they have been. Transparency helps us to maintain trust and ensures accurate school records.

We would like to remind all families that **Leave of Absence requests must be submitted to the school office at least four weeks in advance** of the proposed absence date.

Please note that, in line with government guidance, **holidays during term time cannot be authorised**. However, if your child will be absent from school for any reason, you are still required to complete a Leave of Absence request form so that we can record the absence appropriately.

Thank you for your co-operation and continued support.



Family Support



Early Help in Solihull

The right support at the right time



Community-led Early Help assessments



An Early Help assessment is used to identify and address the needs of children, young people, and their families at an early stage before problems escalate and require support.



<http://bit.ly/4arRa02>

Any professional can complete an Early Help assessment. The Family Support Team will help to assess whether further support is needed based on the Solihull Safeguarding Children Partnership's thresholds for support.

Early Help Coordinators



Early Help Coordinators work with every school or education setting in Solihull to support families.

They review and screen assessments, provide tailored advice to families, and support Designated Safeguarding Leads and other pastoral staff with Early Help.



<http://bit.ly/3WwBx1s>

For more information, please email earlyhelpcoordinators@solihull.gov.uk

Family Helpline

0121 788 4327

Mon-Thu - 09:00-16:30

Friday - 09:00-16:00



The Family Helpline is a phone line for parents, families, professionals, or anyone involved with supporting parents and children in Solihull.

The Helpline is staffed by Family Support Workers who help people find the right services for them, whether that be signposting to Family Hub sessions, facilitating Early Help assessments and referrals, or offering bespoke advice on next steps.

We acknowledge that not everyone will be able to access the Helpline. All are welcome to visit the Hubs in-person or email familyhubs@solihull.gov.uk to be directed to the right support service for them.

YOUTH OFFER

Our youth offer defines what activities, opportunities and support is available for young people between 11-18 years old or up to 25 years old for those with SEND.



<https://bit.ly/4mDmVQO>



The SSCP includes organisations that work with children and families such as Solihull Council, West Midlands Police, local NHS services and schools. They work together to safeguard and promote the welfare of all children and young people in Solihull.

www.safeguardingsolihull.org.uk/sscp



Local centres where children, young people, parents, and carers can access support and take part in fun activities!

We work with trusted partners with expertise in areas such as education, finance, health, maternity, and SEND.

Partners include public services such as the NHS and schools and a range of established community groups and charities.

Elmwood (Smith's Wood)

37 Burtons Way, B36 0UG
elmwood@solihull.gov.uk
0121 779 1700

Evergreen (Kingshurst)

42 Kingshurst Way, B37 6DX
evergreen@colebridge.org
0121 779 1724

Hatchford Brook (Elmdon)

Old Lodge Lane, B92 8JE
hatchfordbrook@solihull.gov.uk
0121 704 6943

Riverside (Chelmsley Wood)

289 Bosworth Drive, B37 5DP
riverside@solihull.gov.uk
0121 779 1750

Outreach

Meriden Primary School
Filongley Road, CV7 7LW
Shirley Heath Junior School
Coombe Road, B90 3DS

solihullfamilyhubs



www.solihull.gov.uk/solihull-family-hubs

Family Support

The Family Support Service provide regular drop-in sessions of the Solihull Family Hubs.



Families can simply visit one of the Hubs and chat with a Family Support Worker without needing to book in advance.

The Family Support Team can also complete an Early Help assessment and provide targeted support.

For more information, call the Family Helpline on 0121 788 4327.

Start for Life offer

The Start for Life offer has lots of information and advice on planning for a baby, pregnancy, babies, toddlers, and more.

<https://bit.ly/4qvV4RN>



TOGETHERNESS

Bringing the Solihull Approach to the world. Mums, dads, grandparents, and carers who live in Solihull can access online parenting courses for free by entering the code APPLEJACKS on the Togetherness website.

<http://bit.ly/3LpD7Fe>



familyinfo@solihull.gov.uk <http://bit.ly/4oFRt74>

Local Offer



The Local Offer brings together support services for children and young people with Special Educational Needs or Disabilities (SEND) between the ages of 0-25 in Solihull.

It includes information on:

- SEND Information, Advice, and Support
- Education, Health and Care Plans (EHCPs)
- Solihull Parent Carer Voice and Network
- Strategies such as Graduated Approach
- Engagement hub and surveys
- SEND funding and provision
- Service directory

<http://bit.ly/4oewoaw>

My Solihull Map

The My Solihull Map highlights free and low-cost activities and services from the voluntary, community, faith, and social enterprise sector.



Discover local community groups on the digital map.

www.solihull.gov.uk/communities/my-solihull-map

CONNECTED CARE NETWORK

Working across the NHS and the voluntary, community, faith, and social enterprise sector to care for children and young people in Solihull.



<https://connectedcarenetwork.co.uk>

Togetherness



TOGETHERNESS



An update on

WELLBEING FOR EVERY SCHOOL PARENT

Your NHS learning space created by psychologists

Togetherness is an online learning environment developed by psychologists and health practitioners providing accessible learning about emotional health and wellbeing, proven to positively impact mental health, behaviour and relationships.

[Home - Togetherness](#)

Birmingham Brick Festival

**TICKETS
AVAILABLE
NOW!**

**AMAZING
LEGO DISPLAYS**

**NEW & RETIRED
LEGO SETS**

**BUILD
CHALLENGES**

**ACTIVITIES
FOR ALL AGES**

**CHARITY
TOMBOLA**

**MILLIONS OF
LOOSE BRICKS**

**PLUS SO
MUCH MORE!!**



**BIRMINGHAM
BRICKFESTIVAL.COM**

21ST JUNE



ICC BIRMINGHAM

MORE LEGO® THAN YOU CAN DREAM OF

**BIRMINGHAM
BRICK
FESTIVAL**

West Midlands Fire Service Open Day



WMFS

West Midlands
Fire Service



OPEN DAY

COME AND MEET YOUR LOCAL
FIREFIGHTERS AND SEE OUR FIRE ENGINES!



Ward End Fire Station
July 19th 2026

11 am – 3 pm

Sensory time: 11 - 11:30



COME AND JOIN THE FUN!



Ufity Hubb



Washwood Heath Road, Ward End, Birmingham, B8



Diary Dates



Summer Term 2026

Sat 13 th June	Whole school	St. Anthony's Church 60 th anniversary celebration
Mon 15 th June	Year 6	Parent meeting about Alton Castle 5pm
Wed 17 th June	Year 2	Trip to Mary Arden's Farm
Mon 22 nd June	Year 6	Trip to Oscott College (no charge to parents)
Weds 24 th – Fri 26 th June	Year 6	Alton Castle Residential
Mon 29 th June	New Reception intake parents	Reception Transition Meeting
Tues 30 th June	New Nursery intake parents	Nursery Transition Meeting
Tues 30 th June	Year 3	Trip to Dudley Zoo
Weds 1 st July	Whole School	Whole school Mass led by Year 2 – First Holy Communicants to receive their certificates
Weds 1 st July	Year 3	First Holy Communion children to wear their outfits for Mass and then bring non-uniform for their celebration in the afternoon.
Tue 7 th July	Year 6	Trip to Drayton Manor
Weds 8 th July	EYFS	Sports Day am
Thurs 9 th July	Y1 – Y6	Sports Day am
Tues 14 th July	Reception	Trip to Hatton
Tues 14 th July	Year 6	Leavers' Production 4:30pm
Weds 15 th July	Year 6	Leavers' Mass 9:15am
Weds 15 th July	EYFS	EYFS Party
Thurs 16 th July	Year 6	PTA Leavers' event after school
Fri 17 th July	Whole school	Last day in school for pupils

Monday 20th July – INSET day for staff
SCHOOL CLOSED FOR PUPILS UNTIL SEPTEMBER



Diary Dates



Term dates 2026 - 2027

	Term starts	Half term	Term ends
Autumn	Tuesday 1 September 2026	Monday 26 October 2026 to Friday 30 October 2026	Friday 18 December 2026
Spring	Monday 4 January 2027	Monday 15 February 2027 to Friday 19 February 2027	Thursday 25 March 2027
Summer	Monday 12 April 2027	Monday 31 May 2027 to Friday 4 June 2027	Wednesday 21 July 2027

Inset days: 1st September, 2nd November, 4th January, 12th February, 7th June, 21st July

P.E Days

Week beginning Monday 15th June

Reception – **Monday and Tuesday**

Year 1 – **Tuesday** and Wednesday

Year 2 – **Tuesday** and Friday

Year 3 – **Tuesday** (swimming and PE)

Year 4 – **Tuesday** and Thursday

Year 5 – **Tuesday** and Thursday

Year 6 – **Monday and Tuesday**



Please remember that earrings **MUST NOT** be worn on PE days.

Head Teacher's Awards



Congratulations!

Reception – Billy – for being a brilliant Kagan partner and spreading joy and kindness with everyone.

Year 1 – Bella P – for always being a kind and considerate member of Year 1. Keep shining like Jesus!

Year 2 – Maja – for always demonstrating our gospel virtues impeccably and being a joy to teach! Keep it up 😊

Year 3 – Luna – for your hard work, positive attitude and enthusiasm. You are a joy to teach!

Year 4 – Ava-Mae – for boundless enthusiasm and good humour in all of our lessons. Your bubbly nature brings us so much joy!

Year 5 – Malakai – for always being a respectful member of the class and shining like Jesus!

Year 6 – Farhan – for becoming more independent in your learning and daily routines.

